











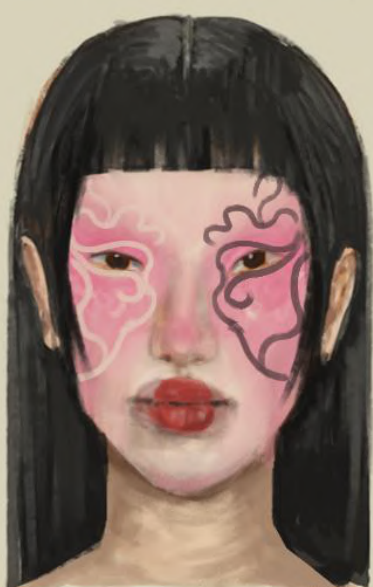
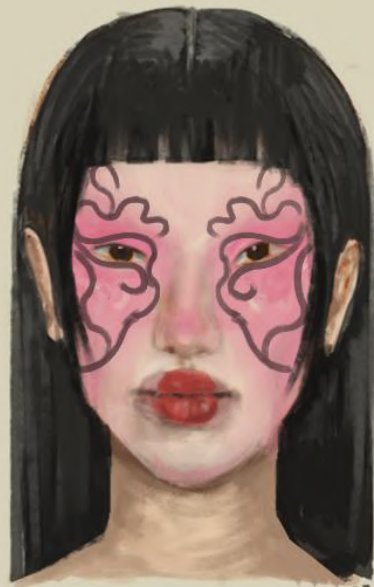
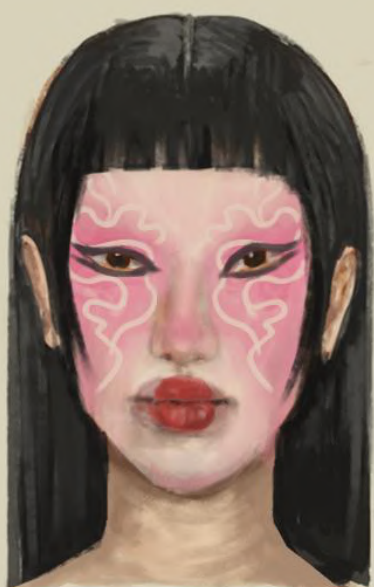
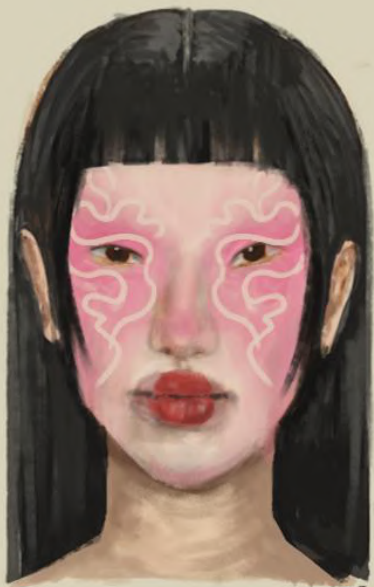
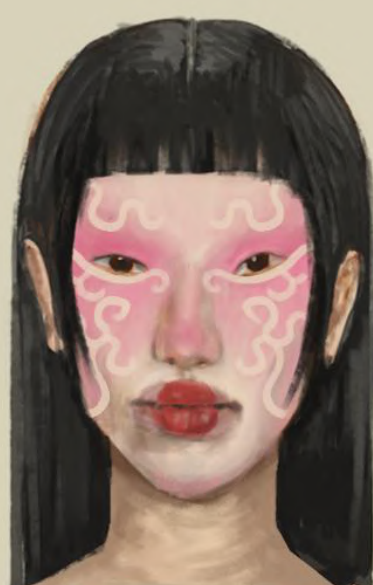
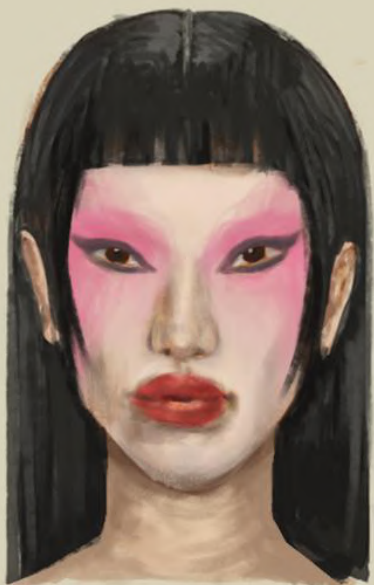


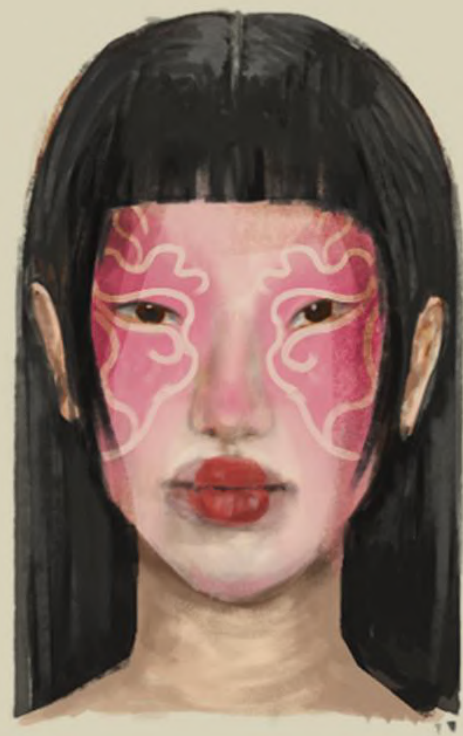
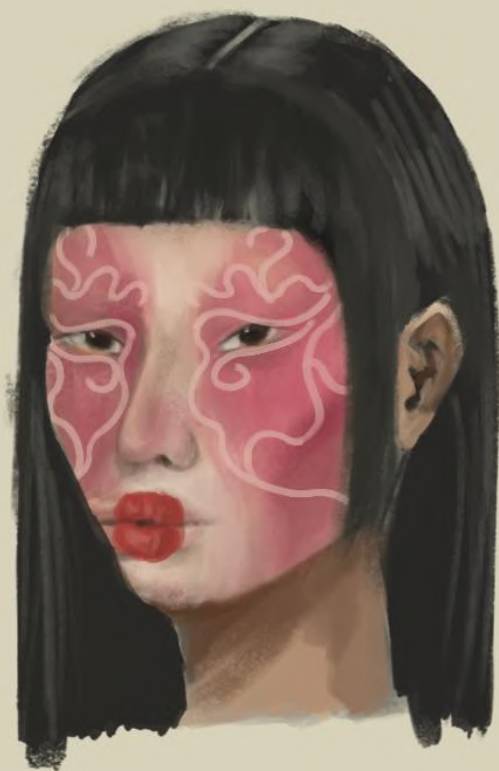
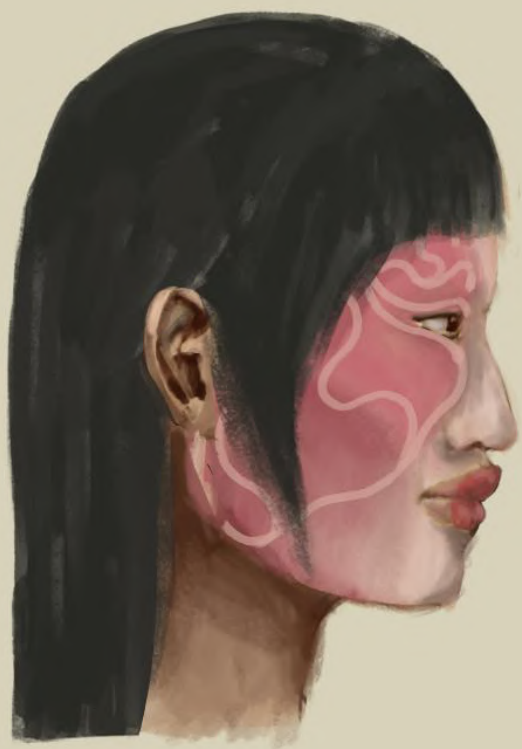
CHARACTER HAIR















Pearl material



Blue tinted glass



Diamonds forming a ring



Ruby in the centre



Pearl material



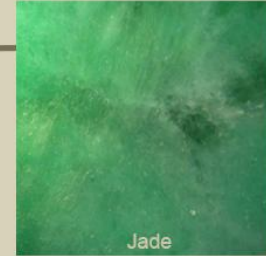
Metallic material



Soft Polyester fake flowers



Fluffy, soft velvet material

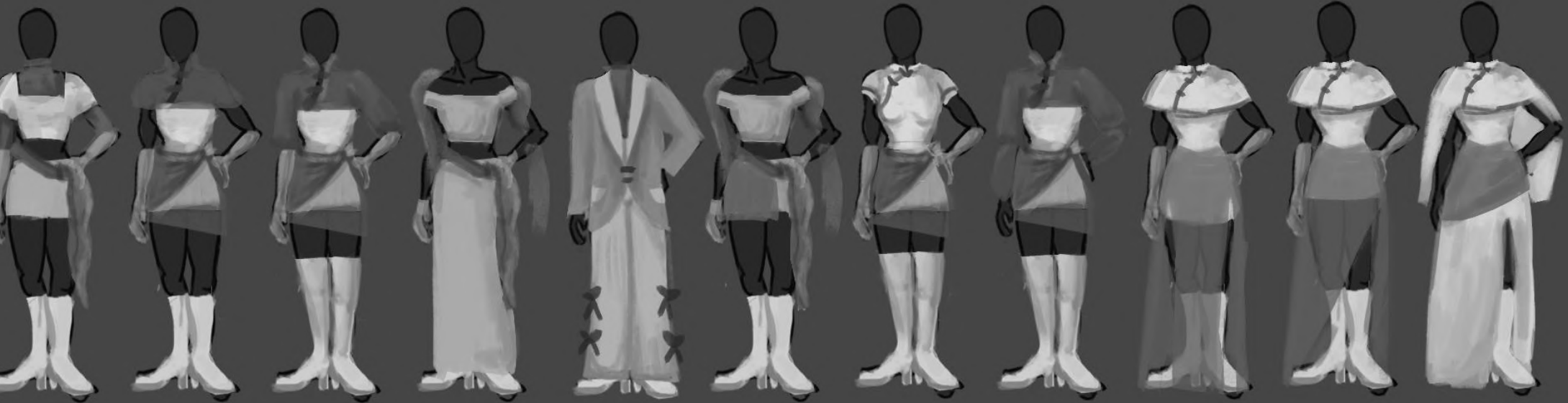
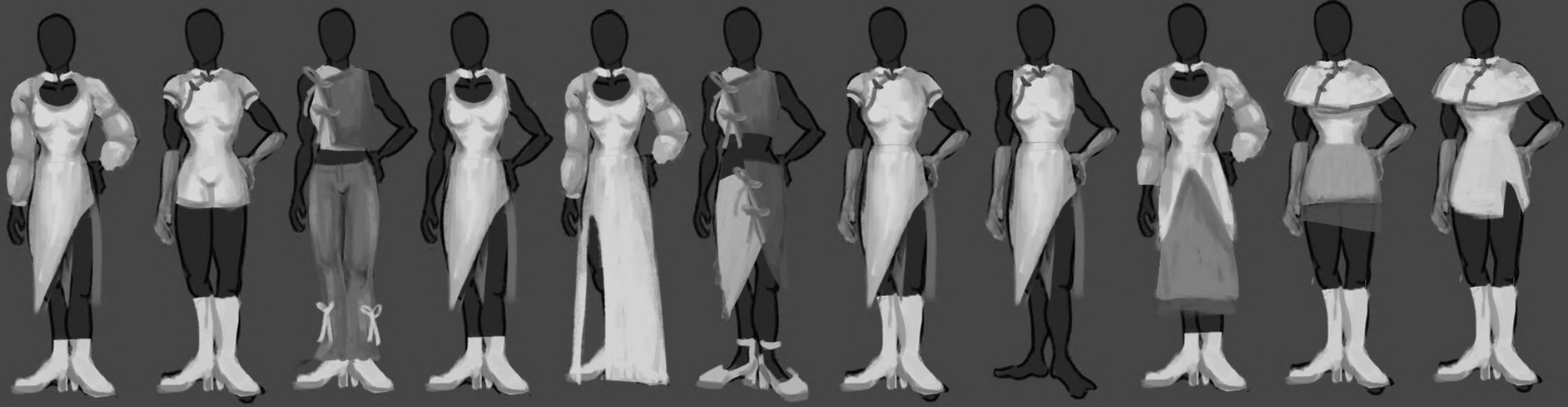


Jade



Tassels

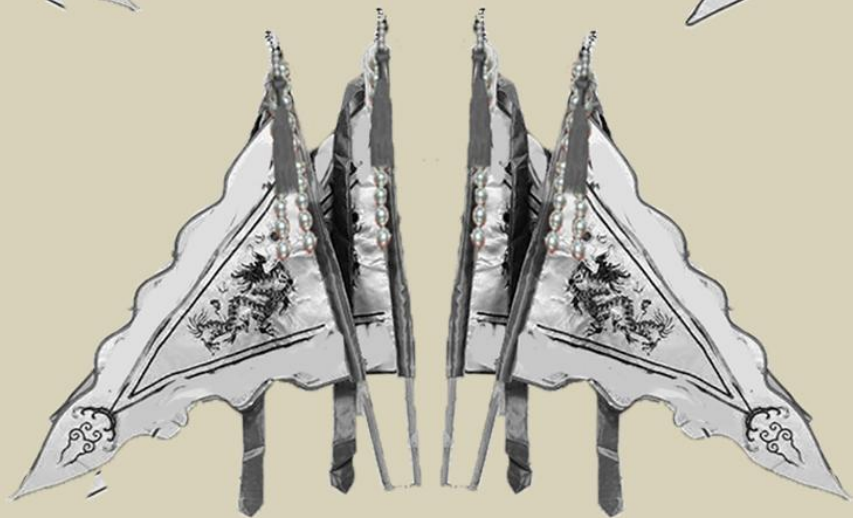
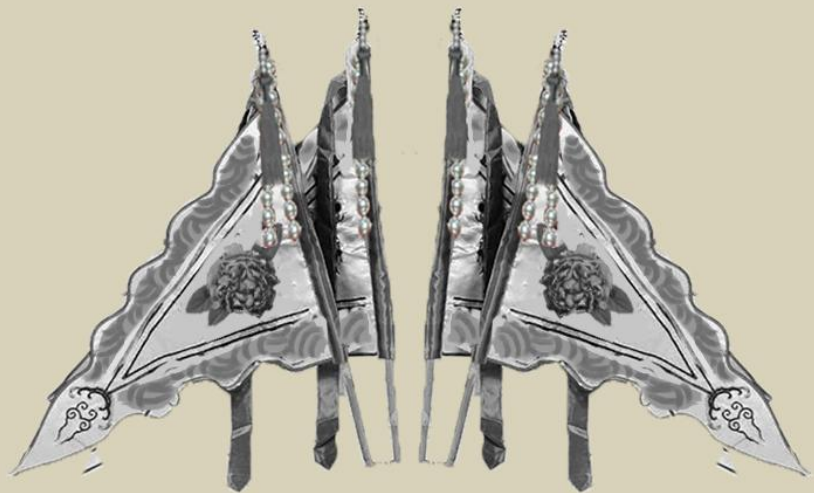












1



2



3











Pearl material



Overall clothing material is reflective silk



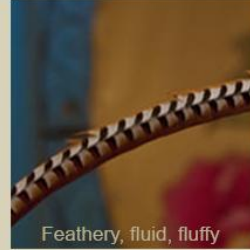
Patterns and design on clothing - metallic embroidery



Tassles



Fluffy, soft velvet material



Feathery, fluid, fluffy



Thick but flexible canvas



Thicker silk, almost stiff like cardboard, but still has the outer texture of silk and embroidery

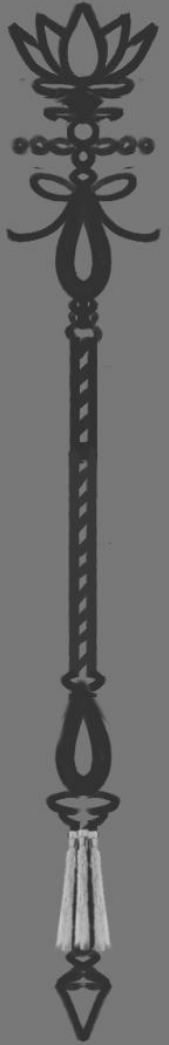
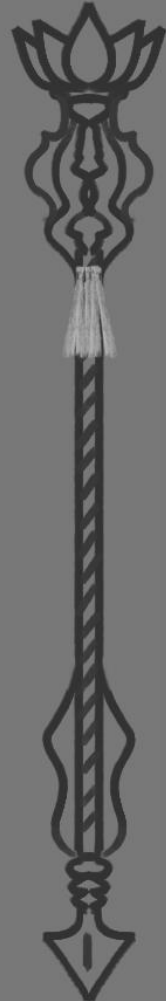
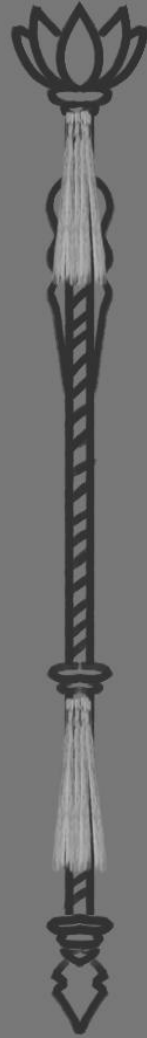
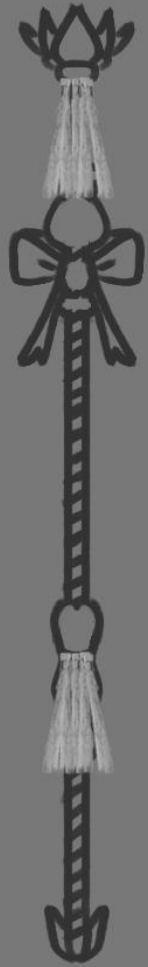


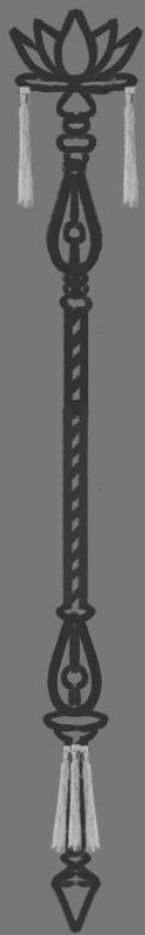
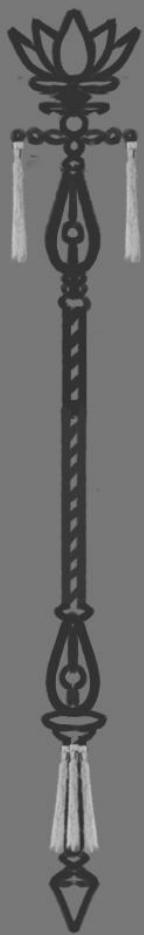






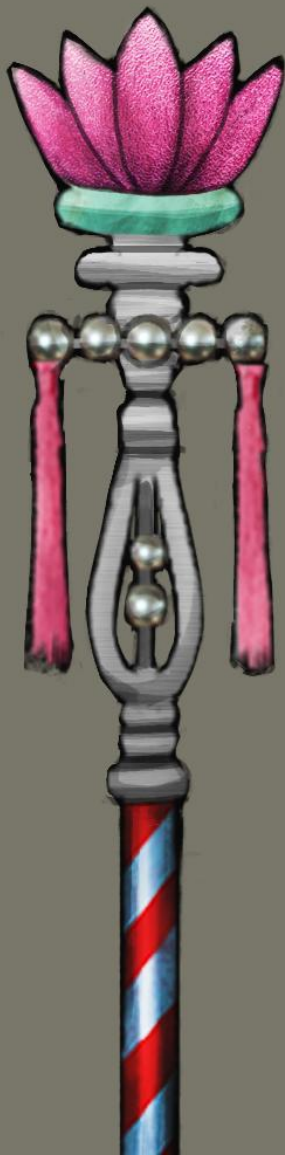


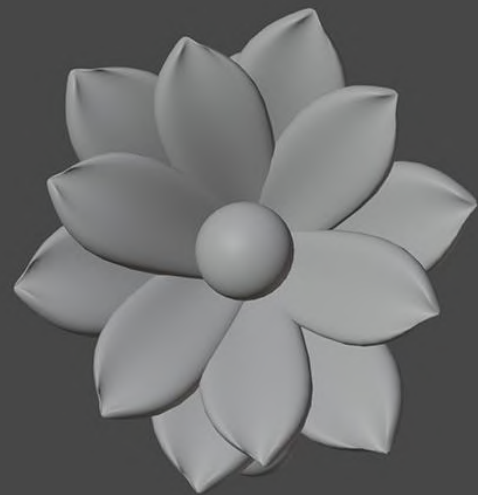
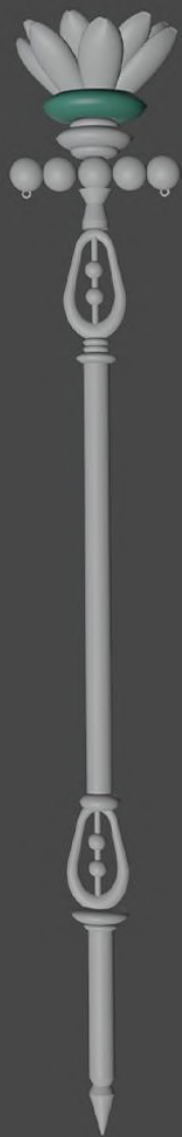
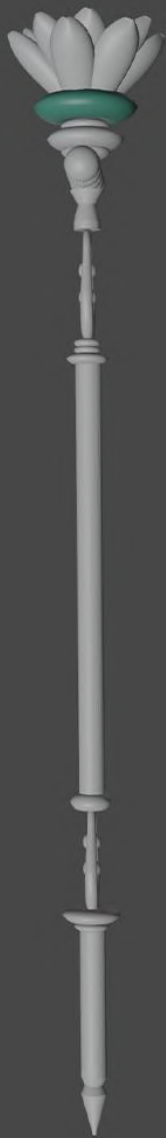
















Pink coloured glass



Jade



Pearl



Metal



Silver



Tassel





鬼門關

北京美体理疗中心

STOP
停







鬼門關





