

Body of Resolved Practice

Chloe Chapman BA3b

2022-2023



“Entwined”

Apple Wood

Carved from Apple wood, this brain like sculpture was created to be held, it nestles into cupped hands and has a silky finish, revealing the natural grain beneath.



“Pitted”

Cherry wood

This sculpture is made up of soft dips and mounds, creating an undulating form that invites touch. It is pleasing to nestle ones thumbs and fingers within the dips as it is held in the hands



“Repaired”

Lilac wood, Brass wire, Resin

This smooth egg shape sculpture is made of lilac wood, finished with Danish oil to reveal the two tones of the grain. The cracks in the wood have been painstakingly filled with brass wire, highlighting the beauty of the imperfections



“Knobby”

Cherry wood

Covered in irregular bumps, this sculpture was inspired by neolithic carved stone balls.



“Grooved”

lime wood

Carved from pale lime wood, this sculpture was charred to receive a burnt finish.



“Bulging”

Apple Wood

Carved from Apple, this sculpture was inspired by pollen grains under the microscope. It was finished with a wax.



“Rippled”

Cherry wood

The undulating curves of this sculpture resemble ripples on water. The shape was carved according to the pattern of the grain



Ovoid

lime wood

This sculpture was carved from green lime wood, its shape resembles a pill.



“Bulbous”

Ash

The smooth finish of this sculpture reveals the striking growth rings of the ash tree



”Spherical”

Cherry wood

This sphere was carved from a found piece of Cherry wood, with a deep, rich colour.



“Looped”

Cherry wood



This sculpture is a rough ring, with a tooled surface texture left over from hand carving.



“Squared”

Cherry wood

This sculpture, made from cherry heartwood, has a mesmerizing grain with swirls of pattern and colour. Its polished sides reveal the intersection of the different growth lines, and there is a raw edge, left rough with the texture of the bark.



“Angled”

Pine wood



This dynamic sculpture has defined ridges that meet in an asymmetrical random pattern.



Curious Collection Exhibition

I exhibited my work in a Solo Exhibition held in Norwich University of the Arts. I explored themes of nature and collection with a series of sculptures made from natural materials exhibited in conjunction with a collection of found natural curiosities stored in glass vials and test tubes.



Beauty for
Crystals *Seal pods* *Latex* *Callus*
Sea shells *Burrows* *Feathers* *Gulls*
Shells *King* *Fossils* *Teeth*
Poros *Seaweed* *Tea*
Shells *Shells* *Milk* *Proteins*
Shells *Shells* *Eggshells* *Sea*
Shells *Shells* *With* *Kachiboro*
Shells *Shells* *Callus*
Shells *Shells* *Distilled* *Flowers*
Shells *Shells* *Moss* *Bur* *Horror*
Shells *Shells* *Moss* *Seeds* *Ferns*
Shells *Shells* *Stems* *Ferns*
Shells *Shells* *Hairs* *Shells*



Curious Collection

Nature
Pattern
Object
Material

Chloe Chapman

6th - 10th
March
PS1
(St Georges 1st Floor Landing)

Oak Gall Ball

A sphere is covered in oak galls, pinned through the holes left by the gall wasps as they emerge from their cocoon.



Acorn Ball



A number of acorn cups are attached into a sphere, with the velvety insides of the cups facing outwards.



Alder Cone Ball



The tiny cones of an alder tree are clustered together making a sphere



Pheasant Feather Ball

The breast feathers of a male pheasant have been laid down on a sphere.



Etched Clay

These hollow clay sculptures are burnished and etched with patterns drawn from nature. The clay itself was sourced from the earth by the artist, and refined and cleaned by hand.



Clay Objects

Burnished clay objects. Handheld.



Clay Objects

Impressed clay objects



Vial Collection

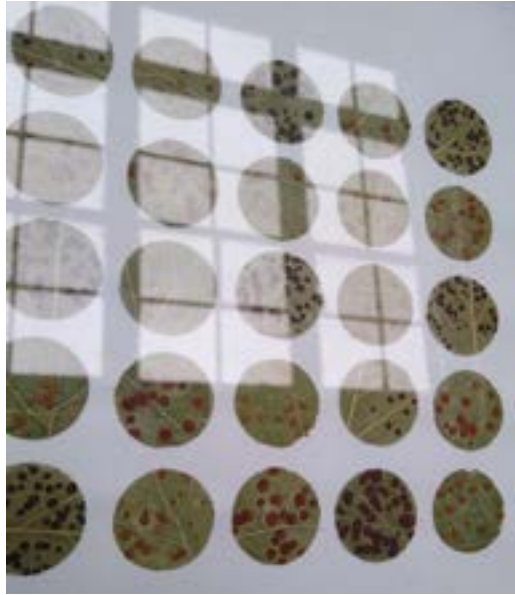






Gall Grid

Oak leaves infected with the galls of tiny wasps, have been pressed and cut into circles. They are laid out in a grid on watercolor paper and framed in salvaged frames.



Stone Gradient

This is an ephemeral artwork, created using pebbles drawn from the artists collection. This work is destroyed and remade again and again as a mediative cycle that Chloe uses as a creative pallet cleanser. Where ever she goes, she finds pebbles to add to here stone collection, and so these artworks weave together the mementos of different places and times as they are created.



Seaweed Embroidery



Winged Prawns: Collaborative work

A pair of cast bronze prawns with preserved goldfinch wings.

