

# DIGITAL PORTFOLIO

OLIVIA PUSHPA PUGH (BA3b)

# ARTIST STATEMENT:

Olivia Pushpa Pugh is a mixed-race artist whose practice traditionally centres around the theme of colour and its relation to varying human emotions and experiences. Pugh's work aims to investigate, highlight and challenge how we naturally associate certain moods with specific visuals. She does so through varying research methods, often posing questionnaires alongside her works, using the information collected to help inform her practice.

Pugh's current work investigates the topic of gender, more specifically, the ways in which femininity can leave its mark on the workplace. The inspiration for the project stems from the research she undertook whilst writing her Research Report, which focused on the lack of female representation in the arts. This project works to combine her previous exploration of colour with her new-found interest in effects gender can have on our perception of day-to-day life. By inserting typically feminine objects into traditionally masculine workspaces, Pugh aims to put a twist on normality and to question our unconscious biases.

@liv.p.art

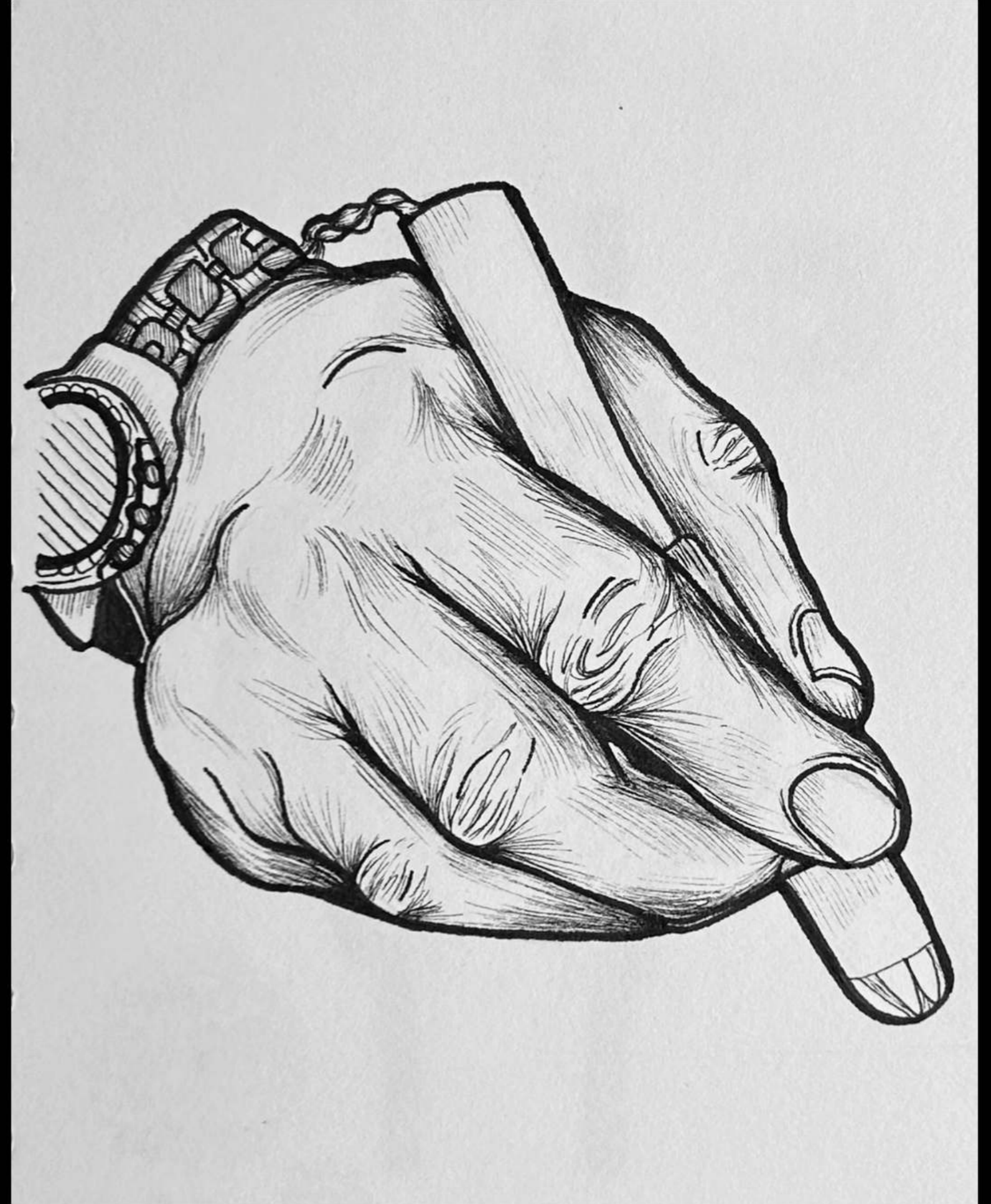


**INK DRAWINGS:**

FINAL INK DRAWINGS - 'OFFICEMAN SERIES' (105 x 148.5 mm)

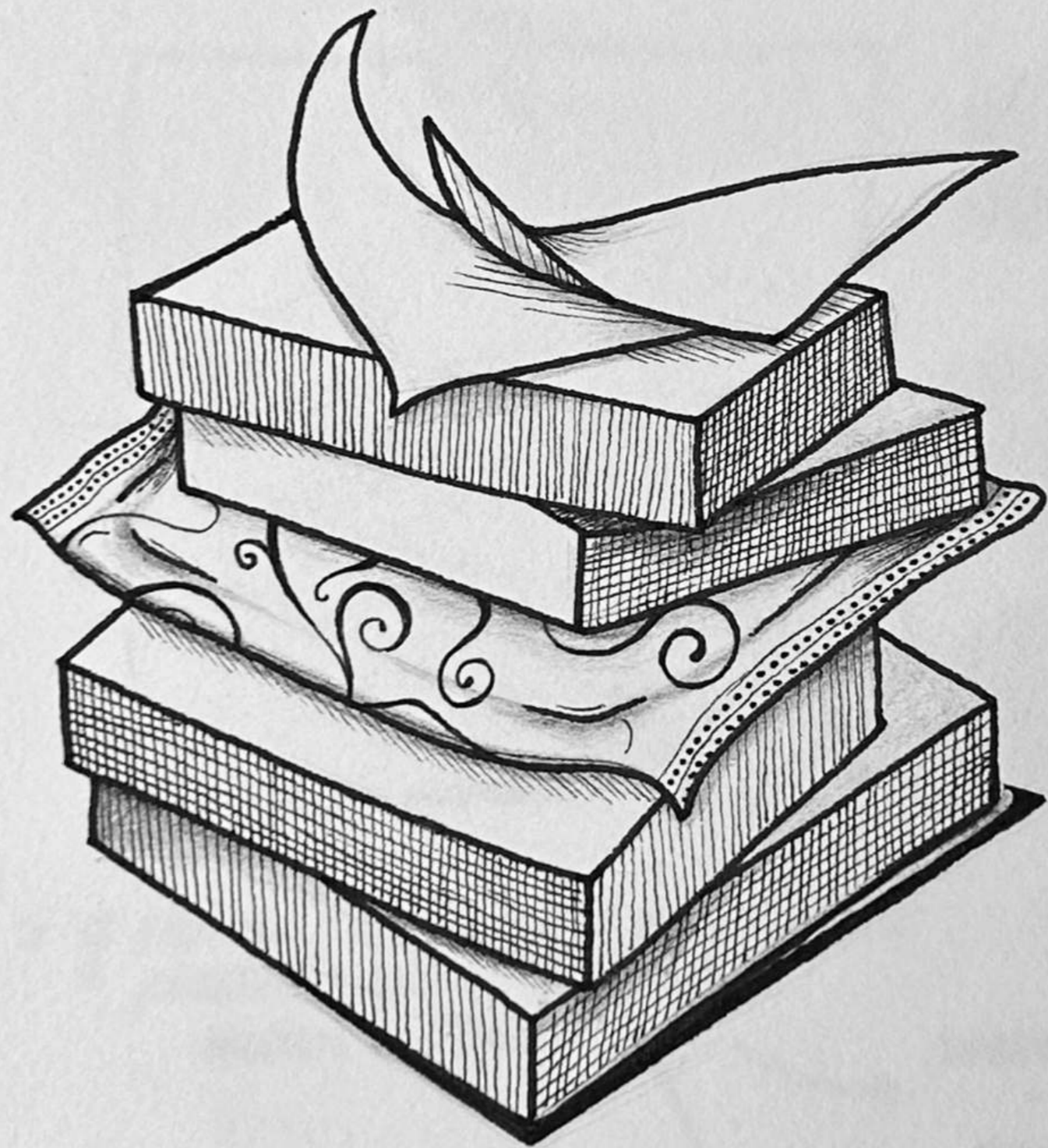


'pocket' (1 of 6)



'scribe' (2 of 6)

FINAL INK DRAWINGS - 'OFFICEMAN SERIES' (105 x 148.5 mm)



'sticky notes' (3 of 6)



'propa cuppa' (4 of 6)

FINAL INK DRAWINGS - 'OFFICEMAN SERIES' (105 x 148.5 mm)

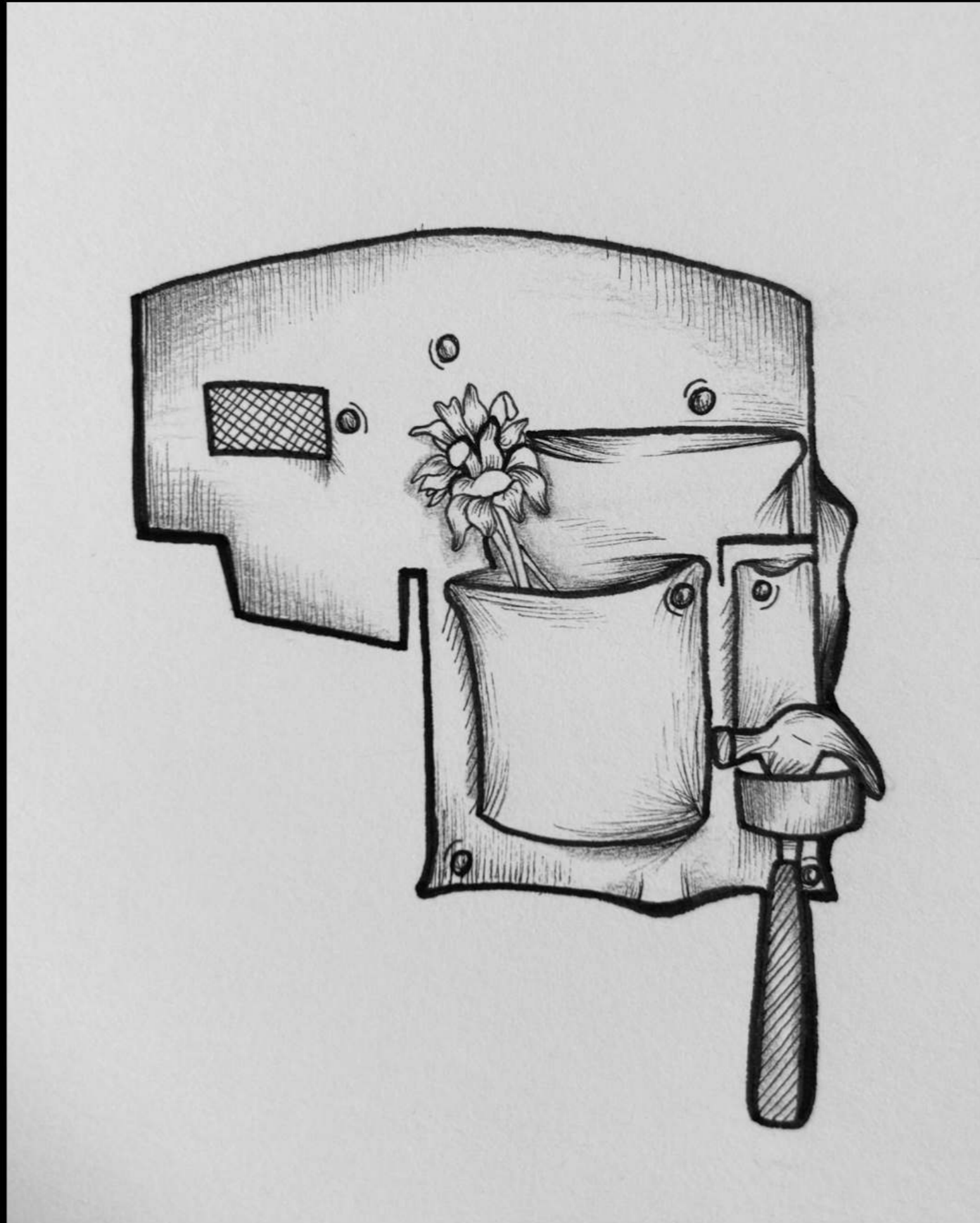


'suit & boa' (5 of 6)

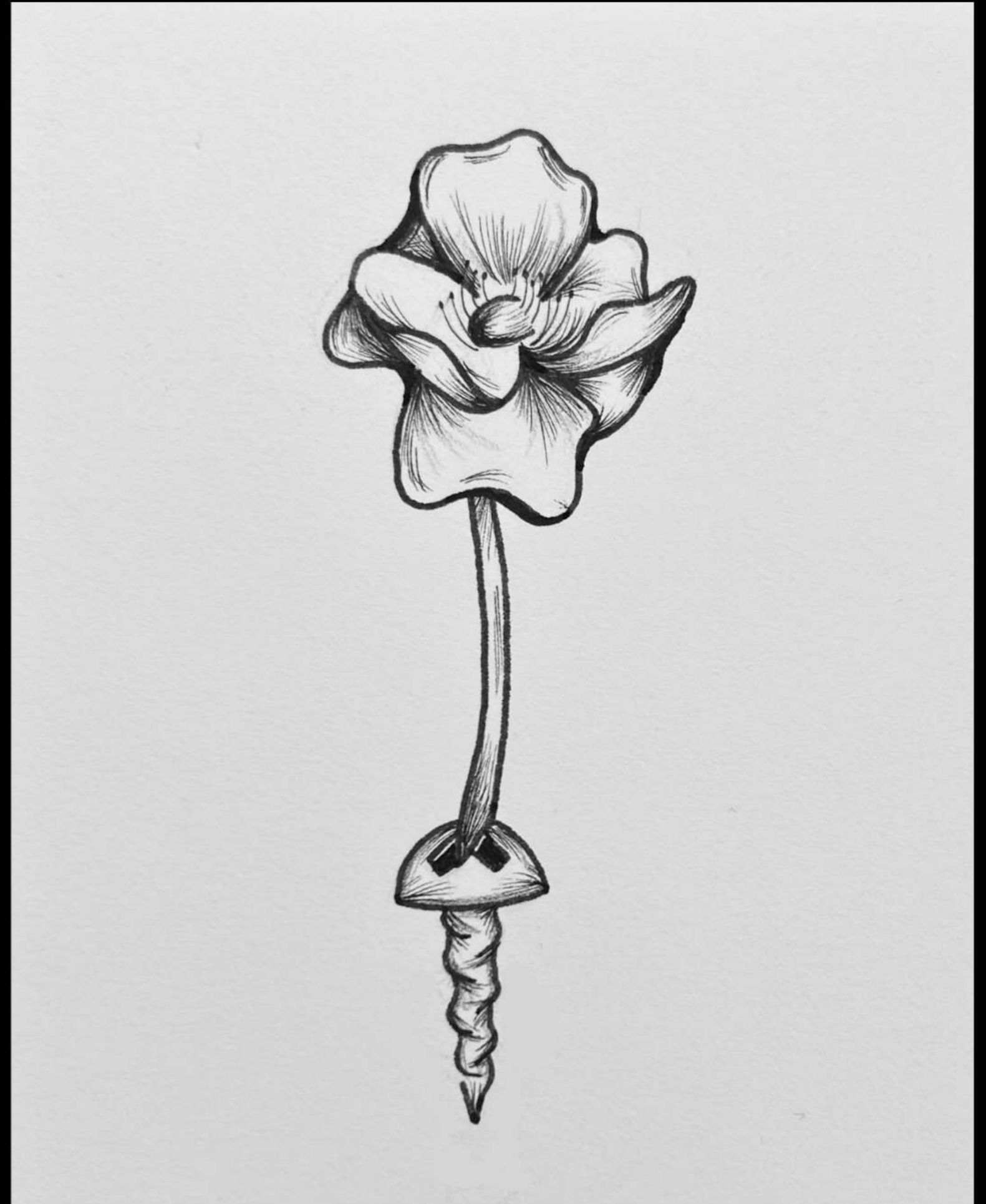


'commuter' (6 of 6)

FINAL INK DRAWINGS - 'HANDYMAN SERIES' (105 x 148.5 mm)



'diy' (1 of 6)

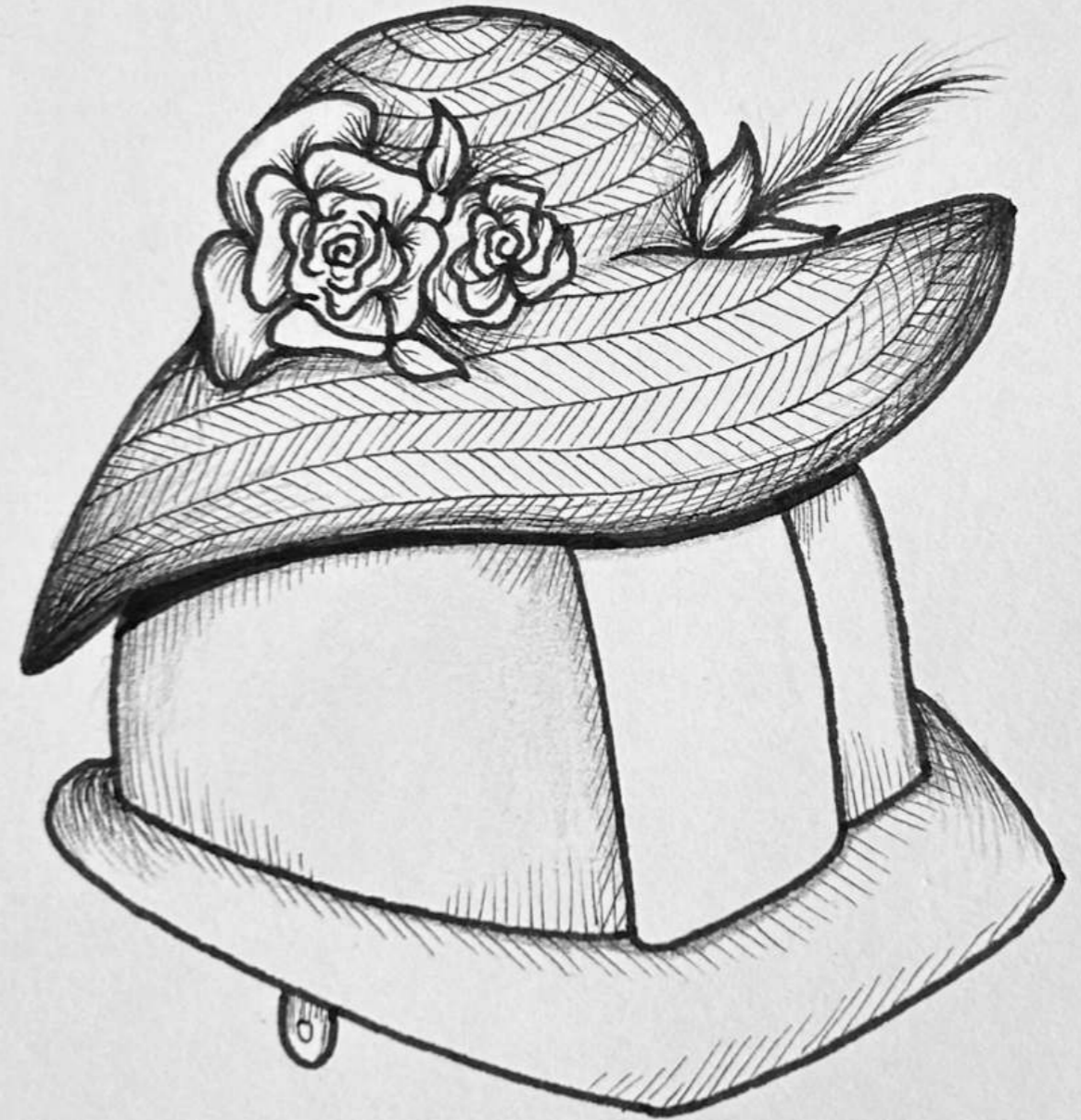


'screwdriver' (2 of 6)

FINAL INK DRAWINGS - 'HANDYMAN SERIES' (105 x 148.5 mm)



'safe keeping' (3 of 6)



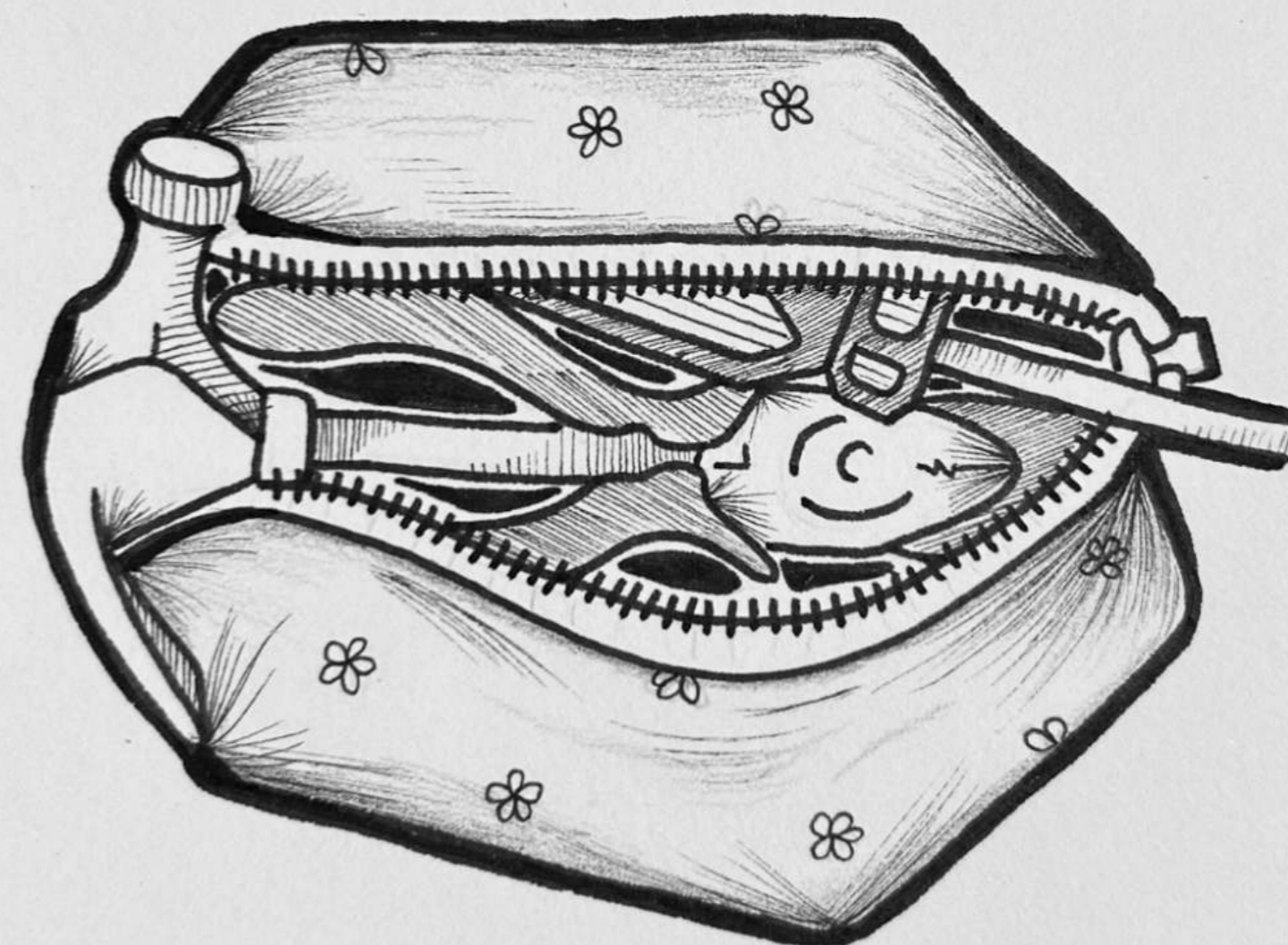
'hatter' (4 of 6)



FINAL INK DRAWINGS - 'HANDYMAN SERIES' (105 x 148.5 mm)



'toolkit' (5 of 6)



'makeup bag' (6 of 6)

**DIGITAL PRINTS:**

FINAL DIGITAL PRINTS - 'THE PEN POT' (210 x 297 mm)

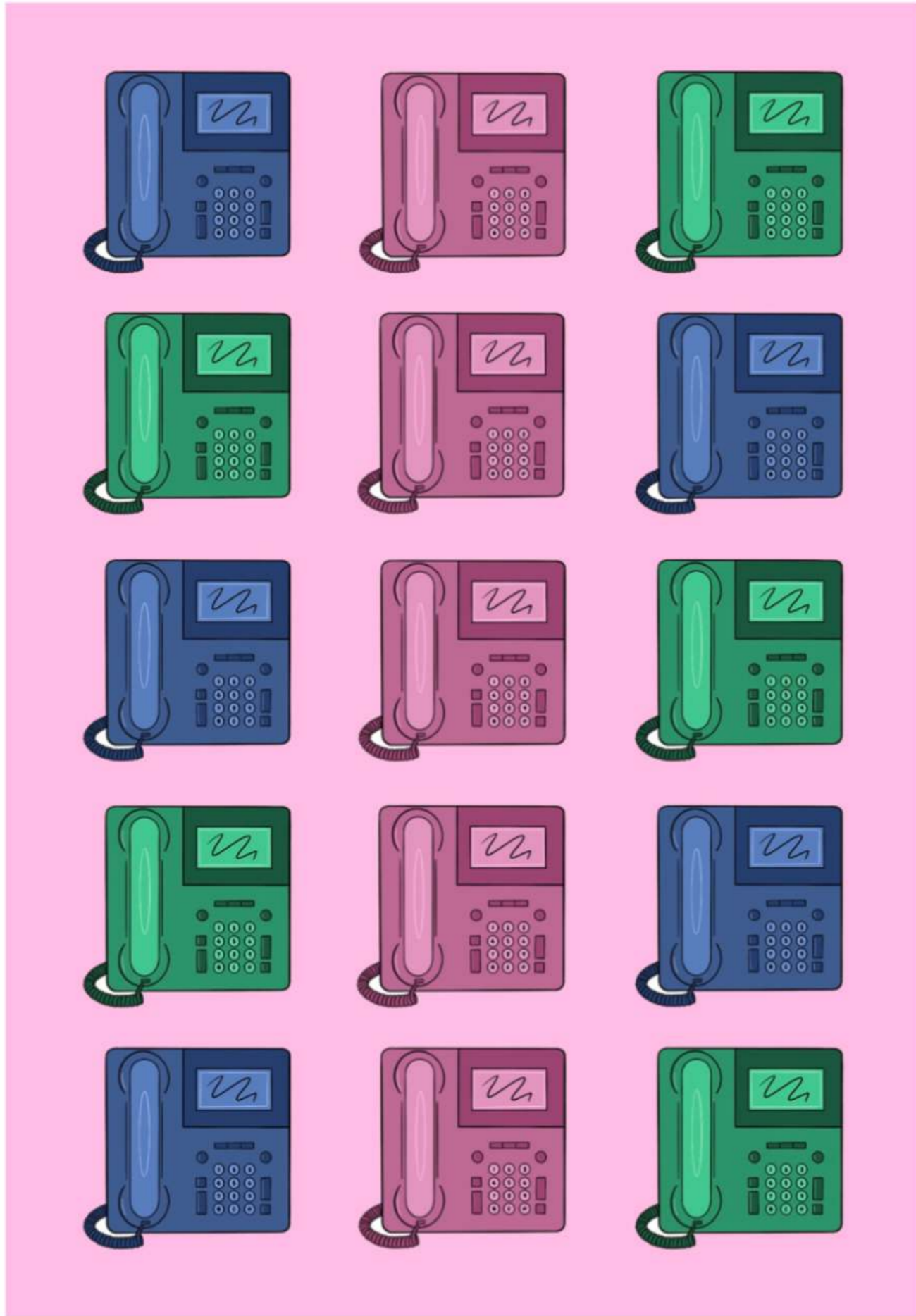


'blue' (1 of 2)

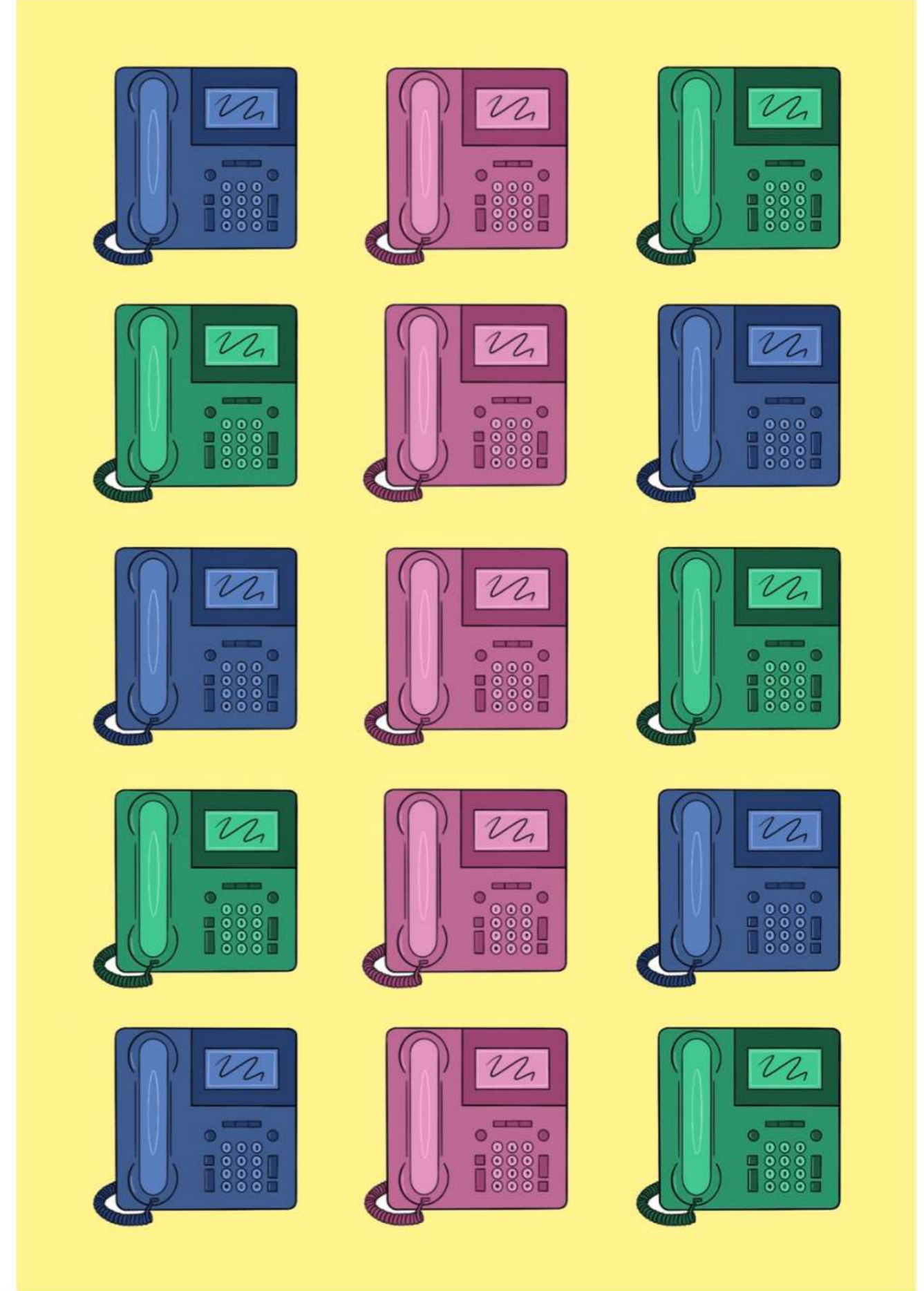


'purple' (2 of 2)

FINAL DIGITAL PRINTS - 'THE OFFICE PHONE', [REPEAT PRINT] (210 x 297 mm)

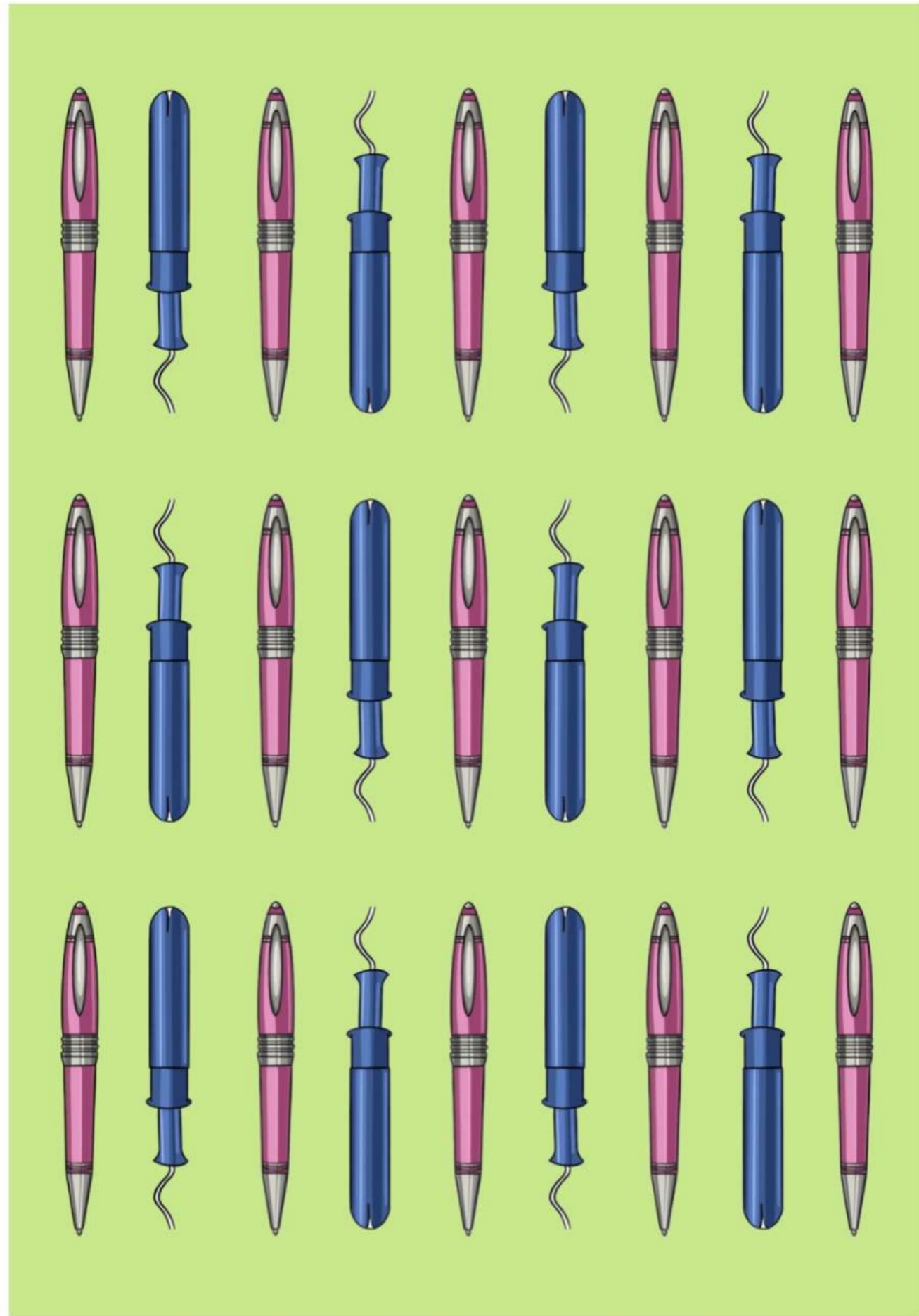


'pink' (1 of 2)

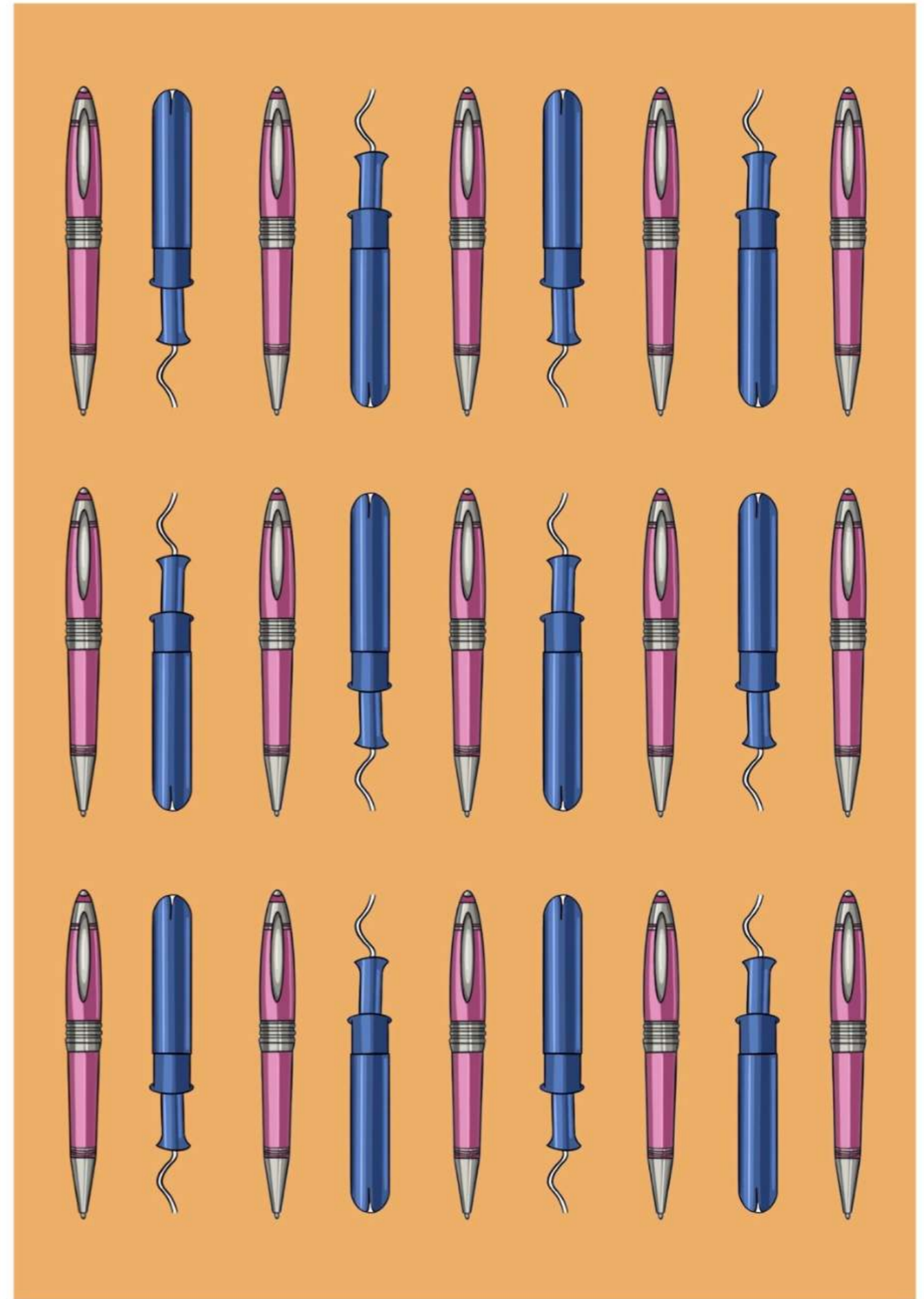


'yellow' (2 of 2)

FINAL DIGITAL PRINTS - 'THE STATIONARY SET', [REPEAT PRINT] (210 x 297 mm)



'green' (1 of 2)

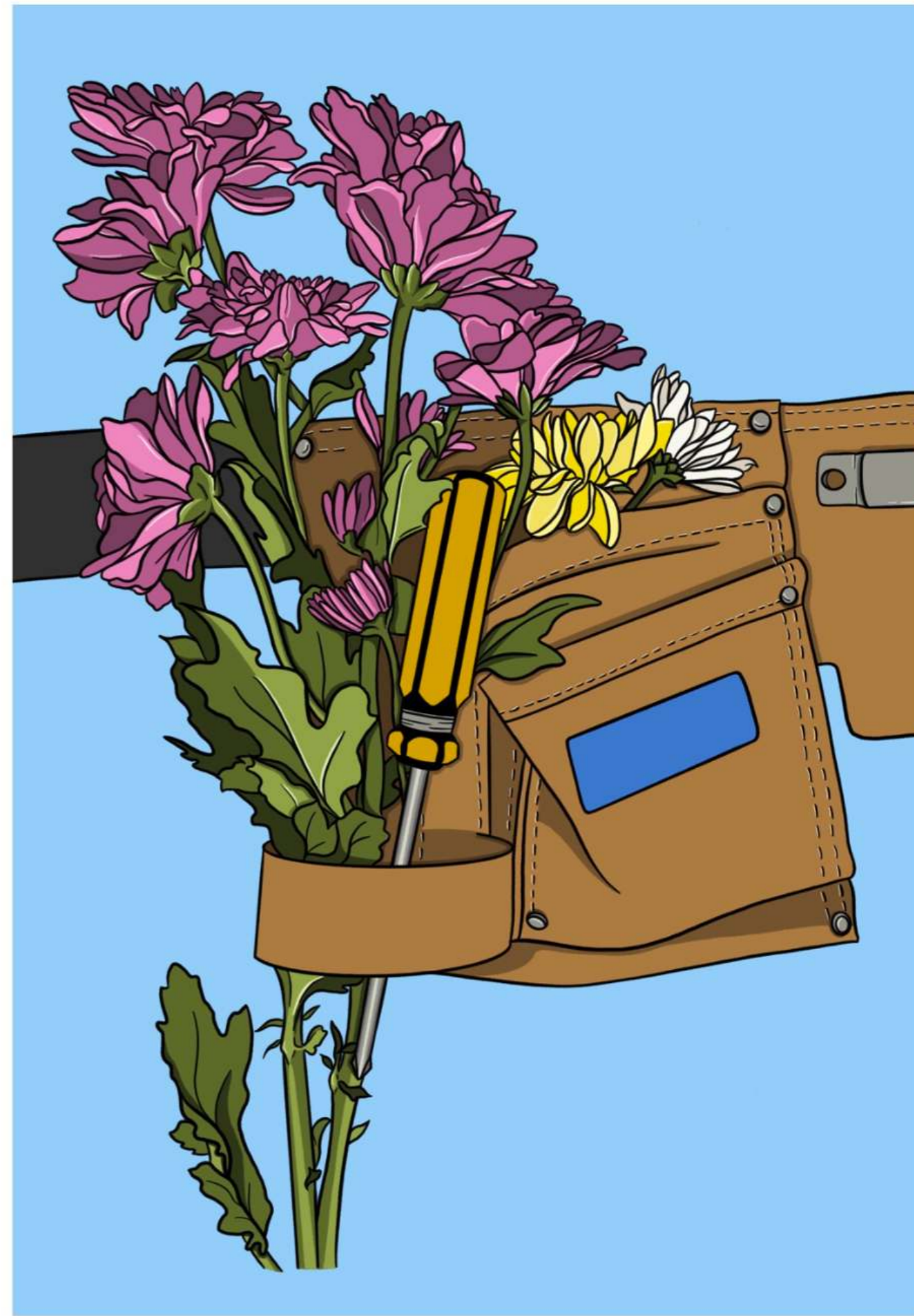


'orange' (2 of 2)

FINAL DIGITAL PRINTS - 'THE TOOLBELT' (210 x 297 mm)



'purple' (1 of 2)



'blue' (2 of 2)

FINAL DIGITAL PRINTS - 'THE HARD HAT', [REPEAT PRINT] (210 x 297 mm)

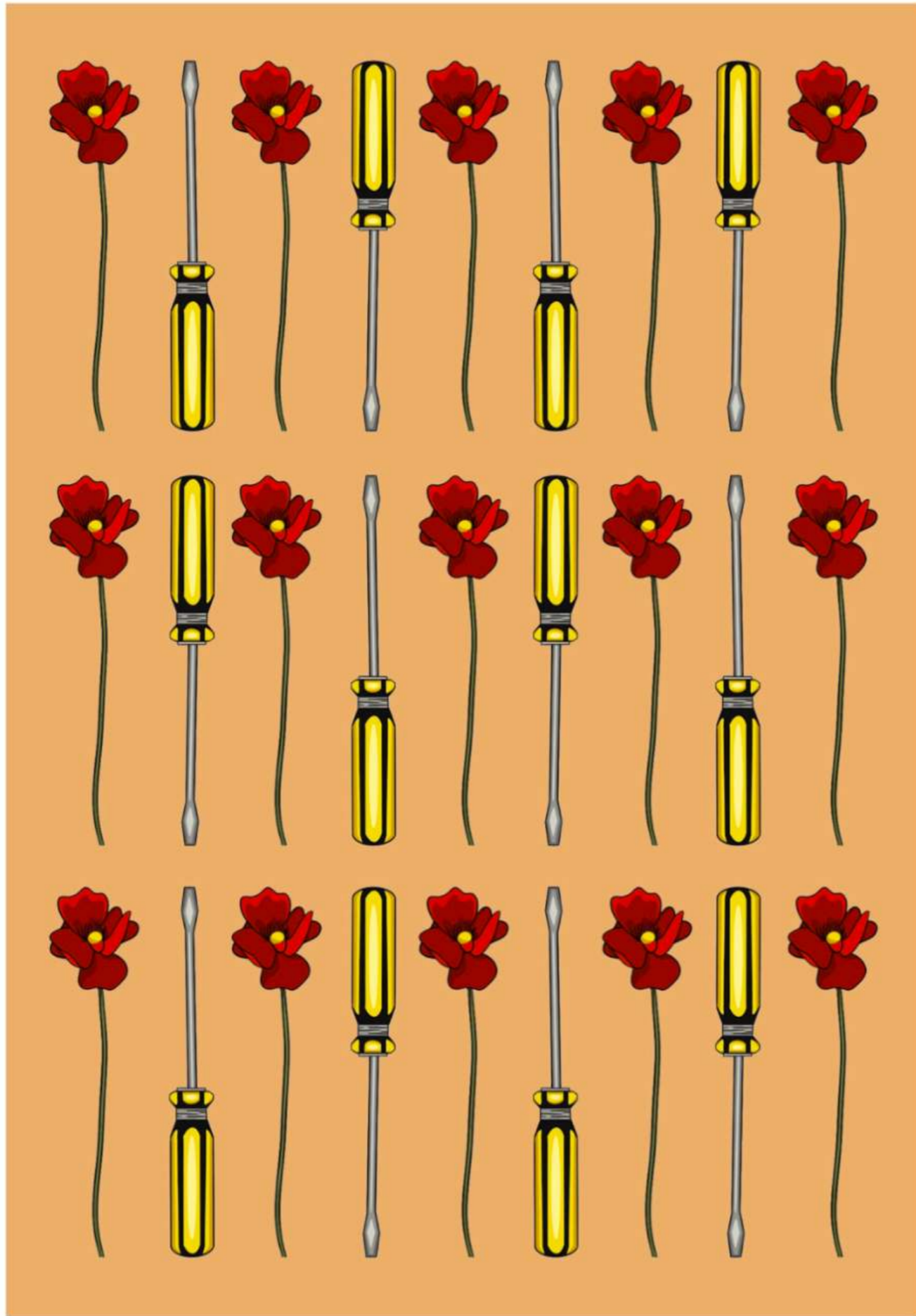


'yellow' (1 of 2)

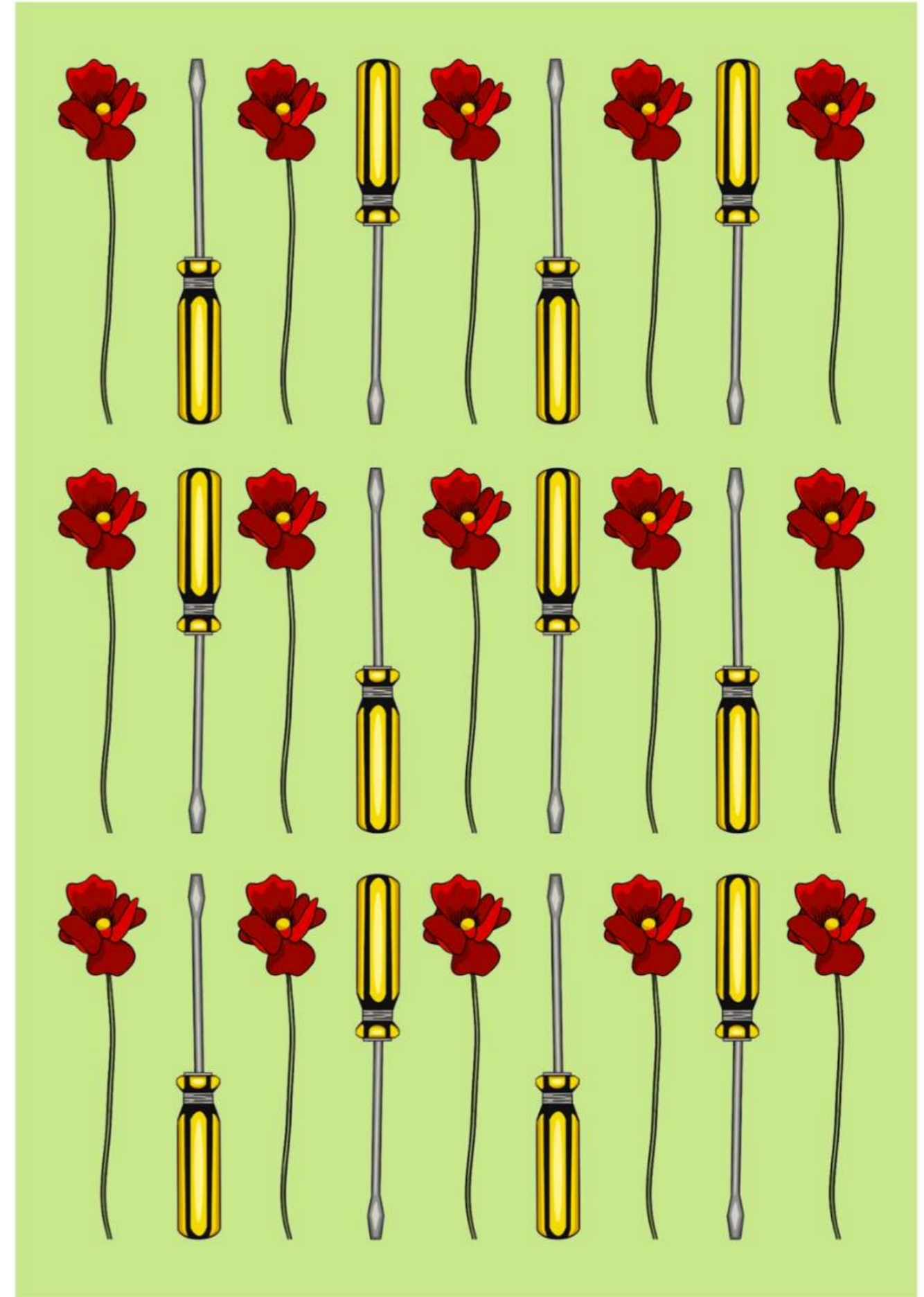


'pink' (2 of 2)

FINAL DIGITAL PRINTS - 'THE TOOL KIT', [REPEAT PRINT] (210 x 297 mm)



'orange' (1 of 2)



'green' (2 of 2)

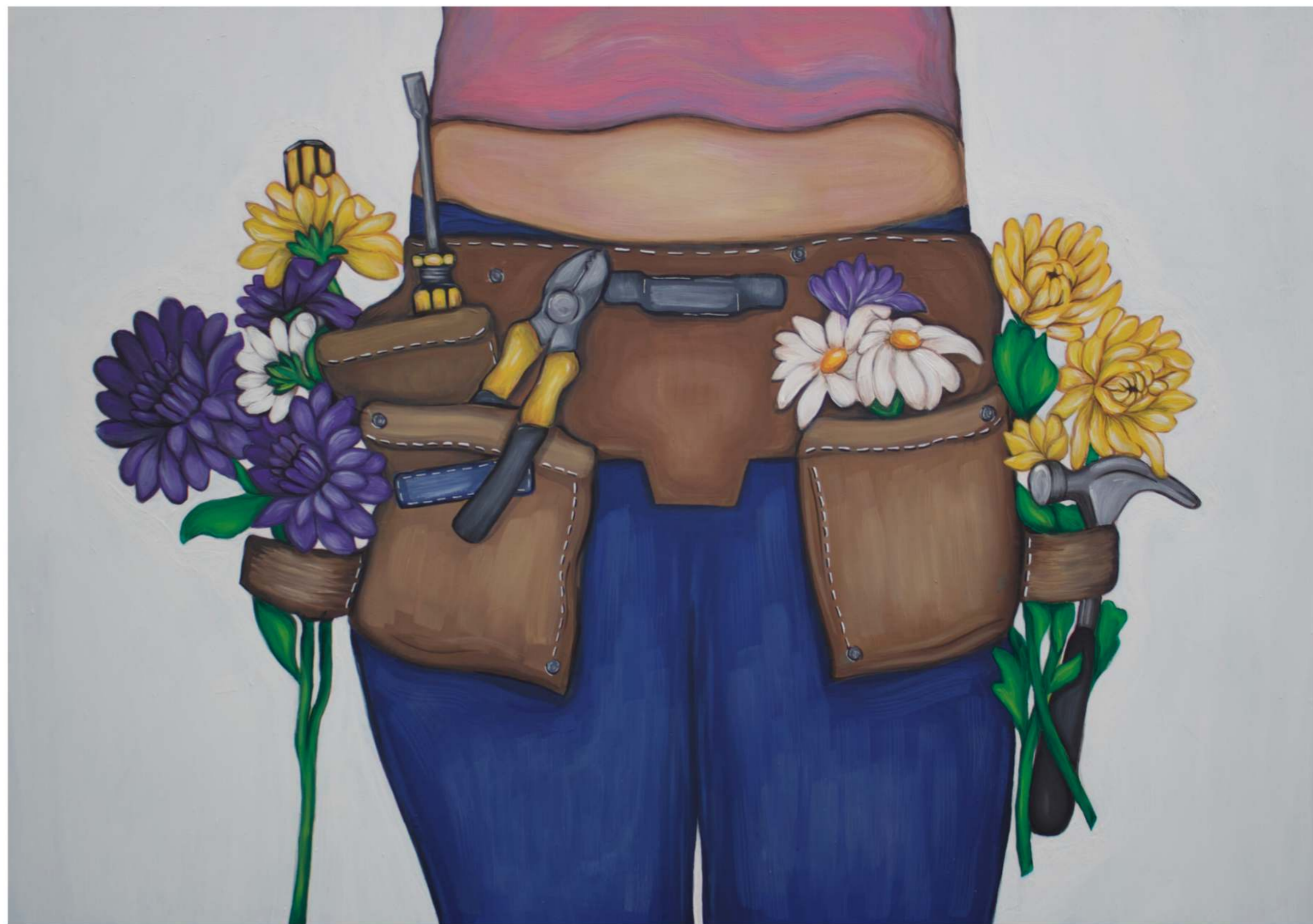


**PAINTINGS:**

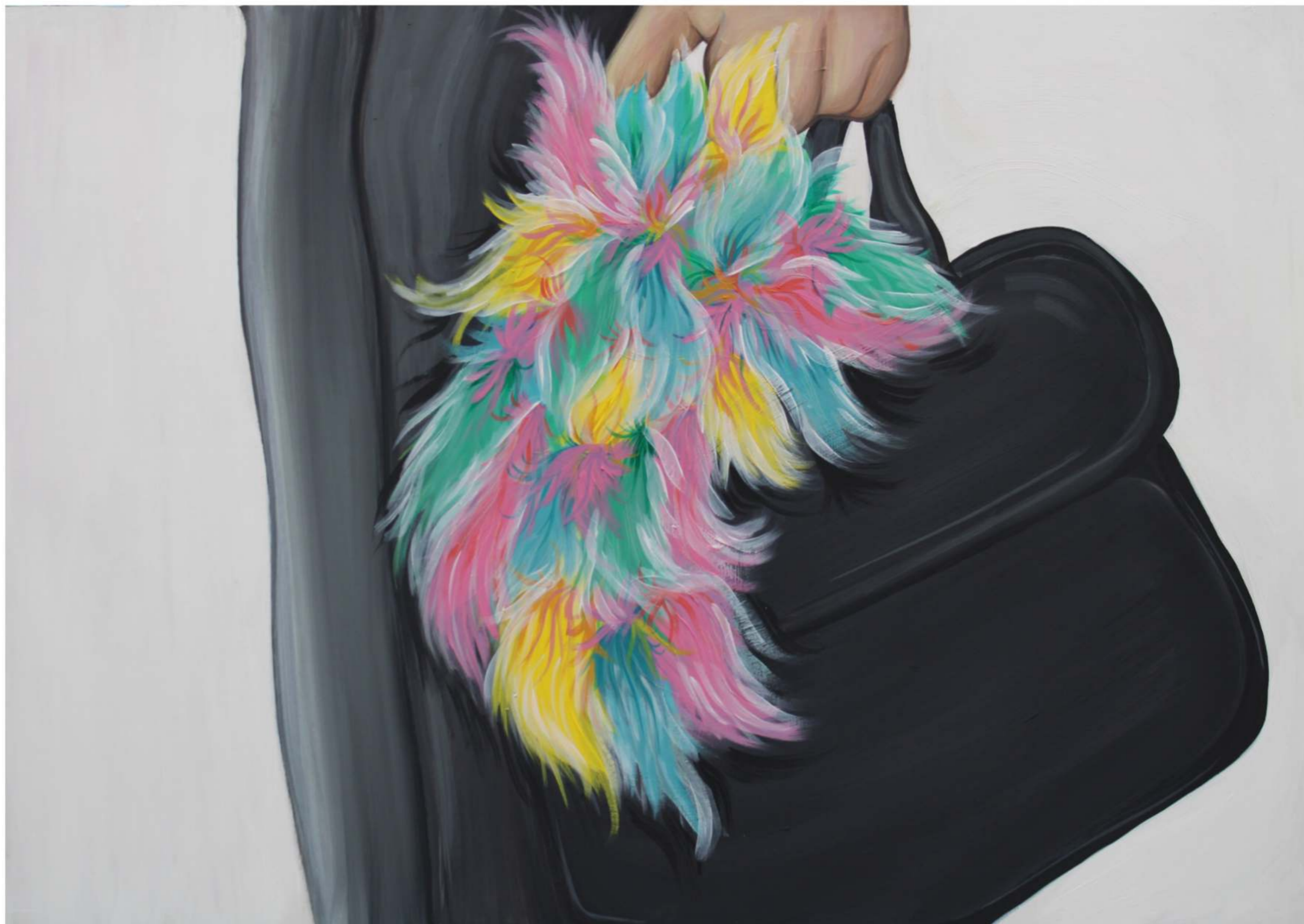
FINAL ACRYLIC PAINTINGS - "THE OFFICMAN" (841 x 594 mm)



FINAL ACRYLIC PAINTINGS - "THE HANDYMAN" (841 x 594 mm)



FINAL ACRYLIC PAINTINGS - "THE COMMUTE" (841 x 594 mm)



The background features a series of overlapping, semi-transparent shapes in various shades of dark purple, indigo, and navy blue. These shapes are irregular and organic in form, creating a layered, abstract composition. The text 'GRADFEST:' is centered horizontally and vertically over this background.

**GRADFEST:**

# GRADFEST DISPLAY - IMAGE 1



GRADFEST DISPLAY - IMAGE 2



GRADFEST DISPLAY - IMAGE 3

